

Ong Lijie 王麗潔 (新加坡)

Born 1993, Lives and works in Singapore

Ong Lijie is interested in themes of the consciousness, corporeality and anxieties. Her work features narratives in which the notion of body is explored as a tool to depict the consequences on the framing and nature of relations between the individual and the collective other. The making of her works seek to translate a disoriented reality in the combination of various printmaking and drawing elements.

Her works aims to materialize the intangible forms of anxieties. Acknowledging the self and body as not a single entity, but one that is fragmented by the framing and conditioning under various spheres of conservative upbringing, expectations, traditions and taboos. The works investigates the tensions of suppressing the instinctual self as a mechanism to cope and adapt while understanding the contradiction of anxieties felt from the man-made construction of culture and societies.

Ong received her Diploma of Fine Arts (Printmaking) from Nanyang Academy of Fine Arts and BA (Hons) in Fine Arts from Goldsmiths, University of London with LASALLE College of the Arts.

王麗潔擁有新加坡南洋藝術學院的版畫專業文憑與拉薩爾藝術學院的榮譽學士學位。

麗潔的作品應用敘事式的手法，結合了多元的素描效果和版畫創作特色，通過描繪人們熟悉的身軀為介入點，探尋弱小個體和集體機制之間的相互關係，進而揭開存在意識及內心焦慮造成的迷惘和無力感。

她的作品旨在讓無形的不安焦慮具體形象化，她認為意識和身軀，是由保守謹慎的教養，無數旁人的期望，條規和禁忌片段式的相互牽制建構而成。作品探求和表達自我抑制本能作為一種途徑去應對和適應而產生的矛盾和緊張，從而化解及融合焦慮於群體架設而成的文化和社會當中。



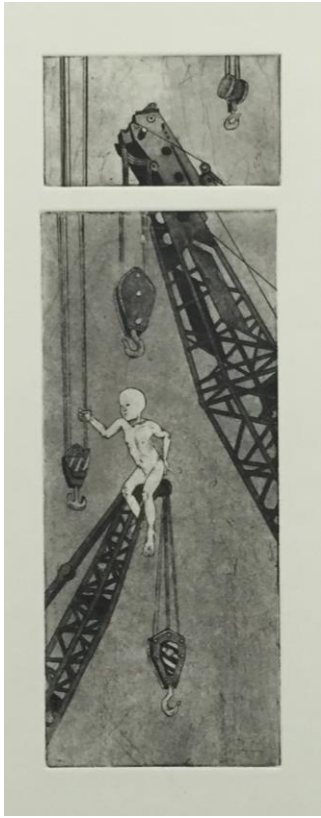
Mad Laced In City_2015_Etching on Schut Salland_82 x 76cm_Edition of 1. HK\$10300



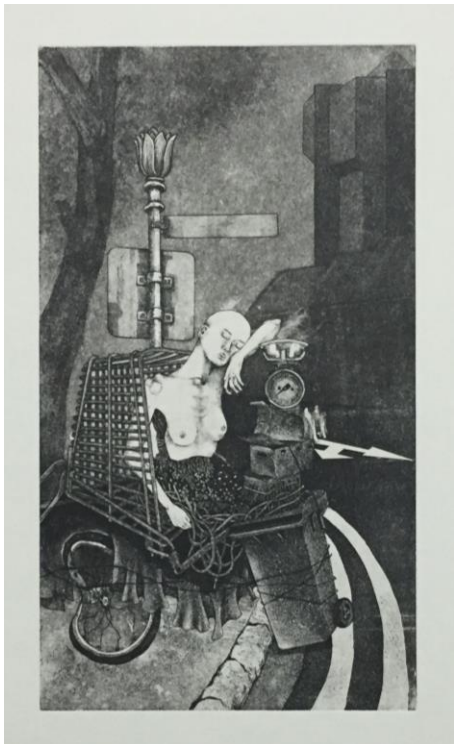
Relic_2016_Etching on Schut Salland_27 x 76cm_Edition of 5. HK\$1750



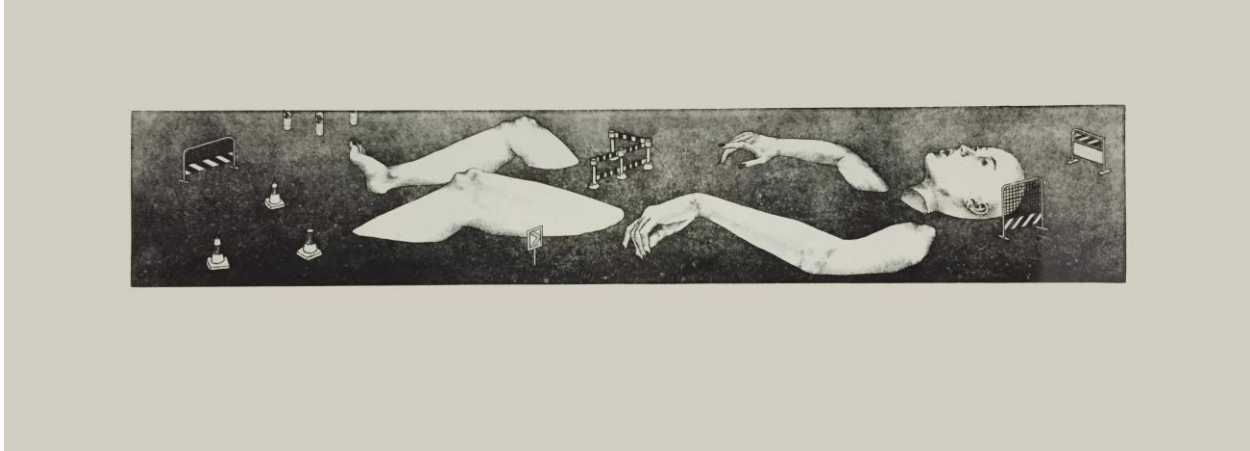
Bodhi Tree_2016_Etching on Schut Salland_23 x 76cm_Edition of 5. HK\$1500



Orphan_2016_Etching on Schut Salland_23 x 76cm_Edition of 5. HK\$1500



Vearasamy_2016_Etching on Schut Salland_23 x 76cm_Edition of 5. HK\$2300



Monument_2016_Etching on Schut Salland_27 x 76cm_Edition of 5. HK2000